

# Mactech Europe



## MTF48120 FLANGE FACING MACHINE

A modular portable machine for flange facing, grooving and weld preparation.

The Mactech MTF48120 is designed to machine full faced, raised face and grooved flanges having a minimum bore of 48" (1219mm) and a maximum outside diameter of 120" (3,048mm).



Mactech MTF 48120 Flange Facer is constructed from the highest quality materials. It is designed to give machine shop accuracy combined with portability and ease of handling for the on-site machining of flanges from 48" to 120" (1219mm to 3,048mm).

The machine consists of four main modules:

1. The Mounting Base is an eight-ram radial clamping chuck. Adjustable clamping jaws on four of the rams are adjusted by an integral rack and pinion arrangement, operating in a similar fashion to a conventional four-jaw chuck. Sectional box lengths bolt together for the appropriate I.D. arrangement. Adjustable clamping jaws on four of the rams are adjusted by an integral rack and pinion arrangement, operating in a similar fashion to a conventional four-jaw chuck. Sectional box lengths bolt together for the appropriate I.D. arrangement.



**Mactech**  
(EUROPE) LIMITED

UK HEAD OFFICE  
EATON BANK TRADING ESTATE  
RIVERDANE ROAD  
CONGLETON  
CHESHIRE  
CW12 1PN



**Mactech**  
(EUROPE) LIMITED

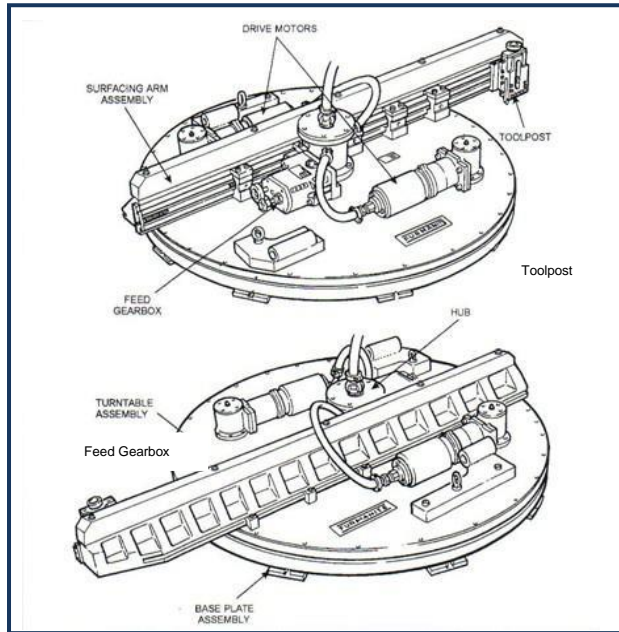
[www.mactechurope.co.uk](http://www.mactechurope.co.uk) - [info@mactechurope.co.uk](mailto:info@mactechurope.co.uk)

DECOMMISSIONING / IN-SITU MACHINING SERVICES / MACHINE SALE & RENTAL

+ 44 (0) 1260 253846

ABERDEEN OFFICE  
MACTECH HOUSE  
HOWE MOSS DRIVE  
DYCE  
ABERDEEN  
AB21 0GL

+ 44 (0) 1224 722666



## Features

- Modular construction
- I.D. and O.D. mounting
- Operates in any position
- Cuts all flange types
- Multiple surface finishes
- Pneumatic or hydraulic drives

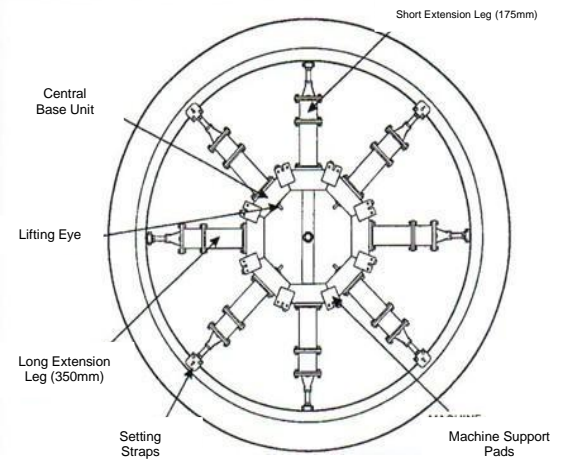
2. The Turntable provides a rigid support for the slide arm and incorporates two pneumatic motors and a right angle feed gearbox. It bolts directly to the base after the base model has been levelled and radially positioned. Using the two pneumatic motors enables the torque to be evened out and also acts as a backlash eliminator. Air input to the motor units is via the centre hub manifold.

3. The Cutting Arm, mounted to the turntable, provides a rigid structure to which the toolpost is secured. Feed in and out is provided by a leadscrew, driven by the gearbox pick-up gear. Feed is selected at the gearbox. The cutting arms assembly permits cuts to a maximum depth of 0.079" (0.5mm) with flange holes. A variety of tools can be fitted to the toolpost according to the finish and cut required.

4. The Drive Gearbox is mounted to the turntable and provides a variety of cutting feeds for different machining applications. Drive input to the gearbox is derived from the hub transfer gear. Four feed rates can be selected by means of a push/pull selector with three positions, traverse IN, traverse OUT and neutral (N).

## Optional Accessories:

- Tube Sheet Mounting Kit
- Tube Sheet Back Facing Kit
- O.D. Mounting Kit
- Orbital Mounting Kit
- Hydraulic Conversion Kit



## Specifications

Weight of turntable (case 1)	2,800lbs (681kg)
Weight of base (case 2)	1,361lbs (526kg)
Total shipping weight	4,180lbs (1,445kg)
Case dimensions (1)	96" x 24" x 51" 2,438 x 610 x 1,295mm
Case dimensions (2)	51" x 13" x 51" 1,295 x 330 x 1,295mm
Flange range	135" (3,429mm) Max O.D. 48" (1,219mm) Min bore 120" (3,048mm) Max bore
Power output	(2) 3.5hp (2.6kw) motors
Air supply requirements	90PSI @ 140CFM

UK HEAD OFFICE  
EATON BANK TRADING ESTATE  
RIVERDANE ROAD  
CONGLETON  
CHESHIRE  
CW12 1PN



[www.mactechurope.co.uk](http://www.mactechurope.co.uk) - [info@mactechurope.co.uk](mailto:info@mactechurope.co.uk)

DECOMMISSIONING / IN-SITU MACHINING SERVICES / MACHINE SALE & RENTAL

+ 44 (0) 1260 253846

ABERDEEN OFFICE  
MACTECH HOUSE  
HOWE MOSS DRIVE  
DYCE  
ABERDEEN  
AB21 0GL

+ 44 (0) 1224 722666



**Mactech**  
(EUROPE) LIMITED