

Mactech Europe



MTF48120 FLANGE FACING MACHINE

A modular portable machine for flange facing, grooving and weld preparation.

The Mactech MTF48120 is designed to machine full faced, raised face and grooved flanges having a minimum bore of 48" (1219mm) and a maximum outside diameter of 120" (3,048mm).



Mactech MTF 48120 Flange Facer is constructed from the highest quality materials. It is designed to give machine shop accuracy combined with portability and ease of handling for the on-site machining of flanges from 48" to 120" (1219mm to 3,048mm).

The machine consists of four main modules:

1. The Mounting Base is an eight-ram radial clamping chuck. Adjustable clamping jaws on four of the rams are adjusted by an integral rack and pinion arrangement, operating in a similar fashion to a conventional four-jaw chuck. Sectional box lengths bolt together for the appropriate I.D. arrangement. Adjustable clamping jaws on four of the rams are adjusted by an integral rack and pinion arrangement, operating in a similar fashion to a conventional four-jaw chuck. Sectional box lengths bolt together for the appropriate I.D. arrangement.



Mactech
(EUROPE) LIMITED

HEAD OFFICE
MACTECH HOUSE
RIVERDANE ROAD
EATON BANK TRADING ESTATE
CONGLETON
CHESHIRE
CW12 1PN
+ 44 (0) 1260 281431



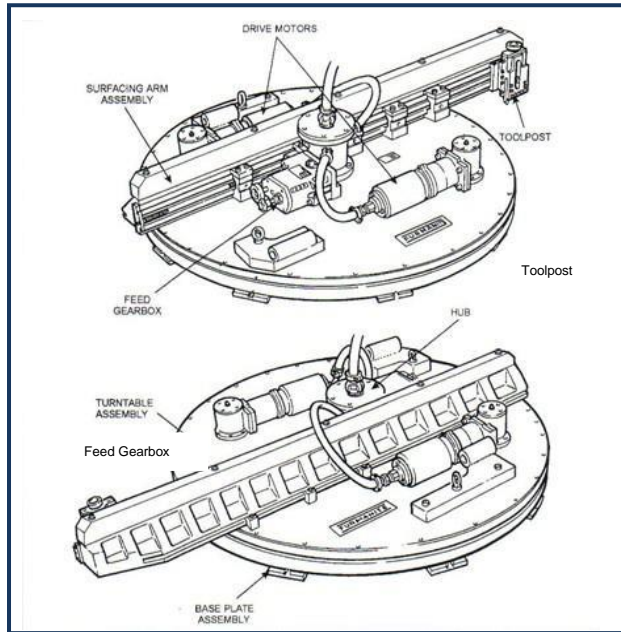
www.mactech europe.co.uk
info@mactech europe.co.uk

ABERDEEN OFFICE
MACTECH HOUSE
HOWE MOSS DRIVE
KIRKHILL IND. ESTATE
DYCE
ABERDEEN
AB21 0GL
+ 44 (0) 1224 722666

Mactech Europe



Internally Mounted Flange Facing Machines



Features

- Modular construction
- I.D. and O.D. mounting
- Operates in any position
- Cuts all flange types
- Multiple surface finishes
- Pneumatic or hydraulic drives

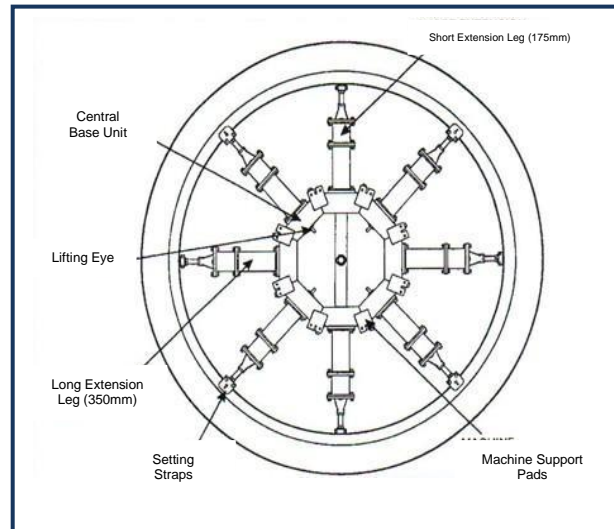
2. The Turntable provides a rigid support for the slide arm and incorporates two pneumatic motors and a right angle feed gearbox. It bolts directly to the base after the base model has been levelled and radially positioned. Using the two pneumatic motors enables the torque to be evened out and also acts as a backlash eliminator. Air input to the motor units is via the centre hub manifold.

3. The Cutting Arm, mounted to the turntable, provides a rigid structure to which the toolpost is secured. Feed in and out is provided by a leadscrew, driven by the gearbox pick-up gear. Feed is selected at the gearbox. The cutting arms assembly permits cuts to a maximum depth of 0.079" (0.5mm) with flange holes. A variety of tools can be fitted to the toolpost according to the finish and cut required.

4. The Drive Gearbox is mounted to the turntable and provides a variety of cutting feeds for different machining applications. Drive input to the gearbox is derived from the hub transfer gear. Four feed rates can be selected by means of a push/pull selector with three positions, traverse IN, traverse OUT and neutral (N).

Optional Accessories:

- Tube Sheet Mounting Kit
- Tube Sheet Back Facing Kit
- O.D. Mounting Kit
- Orbital Mounting Kit
- Hydraulic Conversion Kit



Specifications

Weight of turntable (case 1)	2,800lbs (681kg)
Weight of base (case 2)	1,361lbs (526kg)
Total shipping weight	4,180lbs (1,445kg)
Case dimensions (1)	96" x 24" x 51" 2,438 x 610 x 1,295mm
Case dimensions (2)	51" x 13" x 51" 1,295 x 330 x 1,295mm
Flange range	135" (3,429mm) Max O.D. 48" (1,219mm) Min bore 120" (3,048mm) Max bore
Power output	(2) 3.5hp (2.6kw) motors
Air supply requirements	90PSI @ 140CFM

HEAD OFFICE
 MACTECH HOUSE
 RIVERDANE ROAD
 EATON BANK TRADING ESTATE
 CONGLETON
 CHESHIRE
 CW12 1PN
 + 44 (0) 1260 281431



www.mactech europe.co.uk
 info@mactech europe.co.uk

ABERDEEN OFFICE
 MACTECH HOUSE
 HOWE MOSS DRIVE
 KIRKHILL IND. ESTATE
 DYCE
 ABERDEEN
 AB21 OGL
 + 44 (0) 1224 722666

