

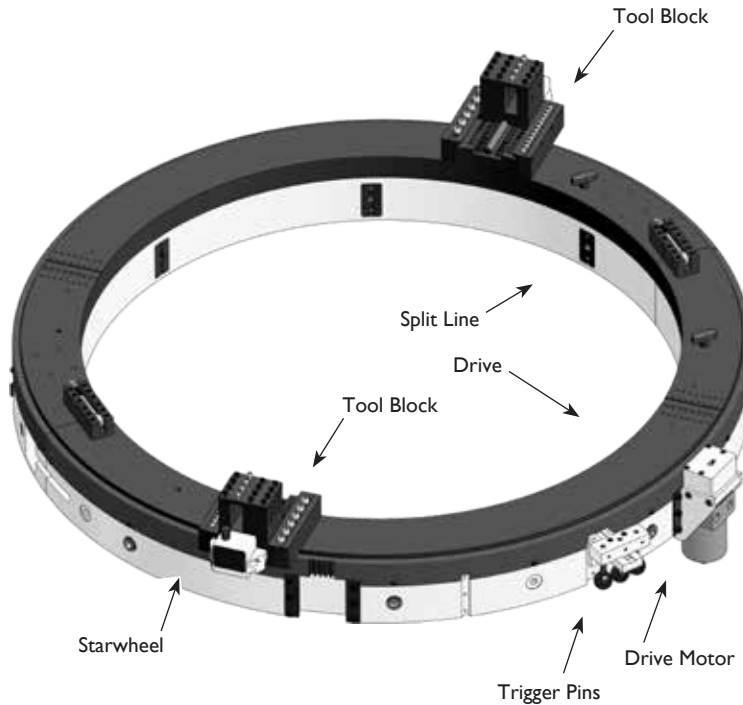
Rental Units
in the UK &
Internationally

Mactech Europe 843WD Clamshell Lathe

Mactech Europe

843WD Clamshell Lathe

Portable Machining Solutions



Options

- Full line of tool bits
- Right angle and reversable drives
- Single Point machining attachment
- Axial feed machining attachment
- Counter-bore / Facing attachment
- Hydraulic Power Unit

Application Range

31.00 to 43.00 inch (787 to 1092mm) diameter pipe, or NPS 32 to NPS 42 schedule pipe

Feed

Feed Mechanism: 4 point starwheel with 3-pin tripper feed. Feed Rate: .002, .004 or .006 inches per revolution (0.05, 0.11 or 0.16 mm).

Drive System- Hydraulic Drive

Air Drive

Air supply requirement: 100 cfm @100 psi (2.8 m³/min @ 6.9 bar)

Hydraulic Drive

HPU requirement: 10-15 gpm @ 1000 psi (38-57 lpm @ 69 bar) continuous pressure Hydraulic motor includes hose whips and quick-disconnects

Weights (includes tool blocks and drive motor)

Operating Weights

843WD Air Drive: 695 lbs. (315 kg)

843WD Hydraulic Drive: 707 lbs. (321 kg)

Shipping Weights

843WD Air Drive: 1100 lbs. (499 kg)

843WD Hydraulic Drive: 1112 lbs. (504 kg)

Features

- Sever or simultaneous Sever / Bevel 31 to 43 inch diameter pipe, or NPS 32 to NPS 42 schedule pipe
- Cold cutting in hazardous environments
- Exceptionally rigid, split frame for precise on-site machining
- Lightweight, low clearance design for easy handling in tight working spaces
- Tool holder accepts standard 3/4 or 1 inch square tool bits
- Air Caddy (air filter and oiler) included with air drive systems
- Customw setups and drives available for your application

HEAD OFFICE
MACTECH HOUSE
RIVERDANE ROAD
EATON BANK TRADING ESTATE
CONGLETON
CHESHIRE
CW12 1PN
+ 44 (0) 1260 281431



www.mactech europe.co.uk
info@mactech europe.co.uk

ABERDEEN OFFICE
MACTECH HOUSE
HOWE MOSS DRIVE
KIRKHILL IND. ESTATE
DYCE
ABERDEEN
AB21 OGL
+ 44 (0) 1224 722666

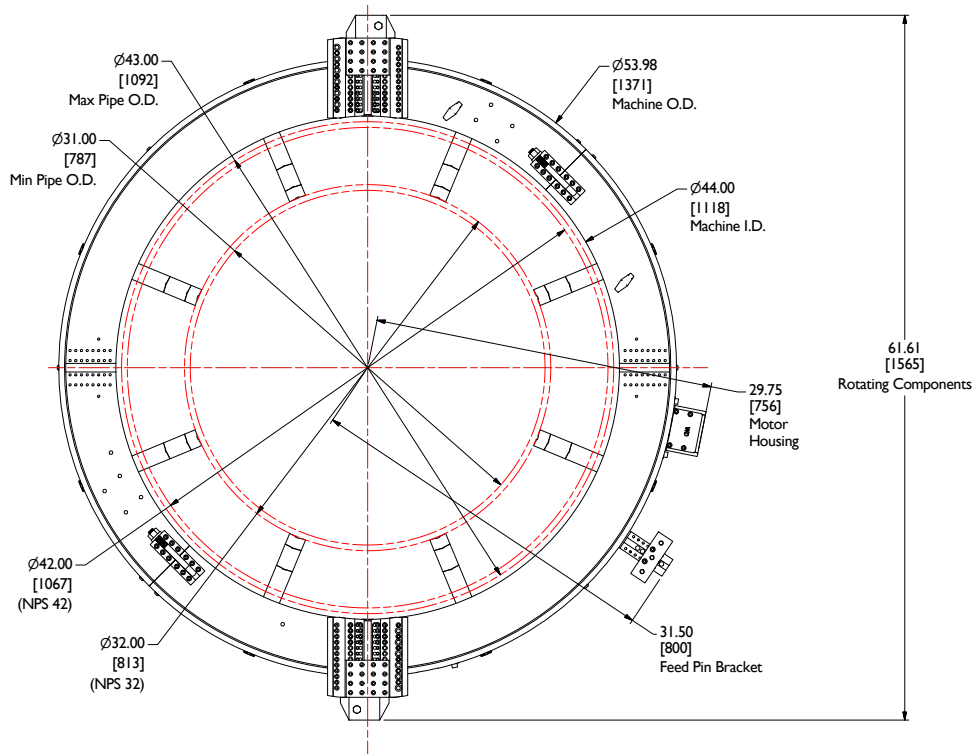


Mactech
(EUROPE) LIMITED

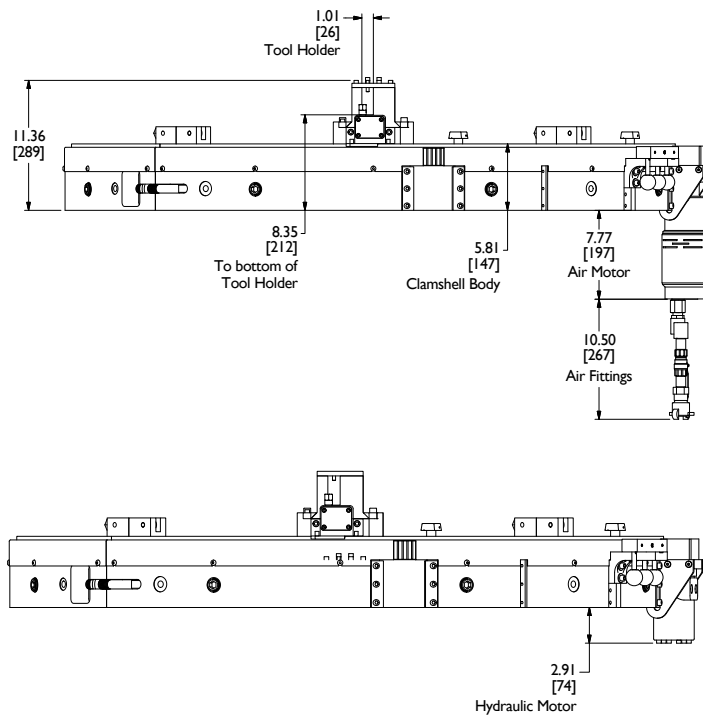
843WD Clamshell Lathe



Mactech Europe 843WD Clamshell Lathe



843WD Nominal Pipe Size (NPS) Application Range



Nominal Pipe Size (in.)	Schedule No.	Wall Thickness (in.)	Inside Diameter (in.)
32 (32.000)	10	0.312	31.376
	ST	0.375	31.250
	20	0.500	31.000
	30	0.625	30.750
40		0.688	30.624
	10	0.312	33.376
	ST	0.375	33.250
	20	0.500	33.000
30		0.625	32.750
	40	0.688	32.624

Nominal Pipe Size (in.)	Schedule No.	Wall Thickness (in.)	Inside Diameter (in.)
36 (36.000)	10	0.312	35.375
	ST, 40S	0.375	35.250
	XS, 80S	0.500	35.000
42 (42.000)	ST, 40S	0.375	41.250
	XS, 80S	0.500	41.000
	30	0.625	40.750
	40	0.750	40.500

