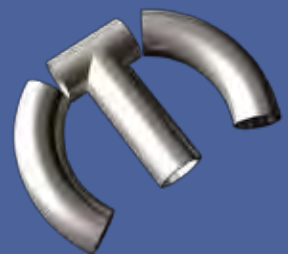




FOR SALE or RENT

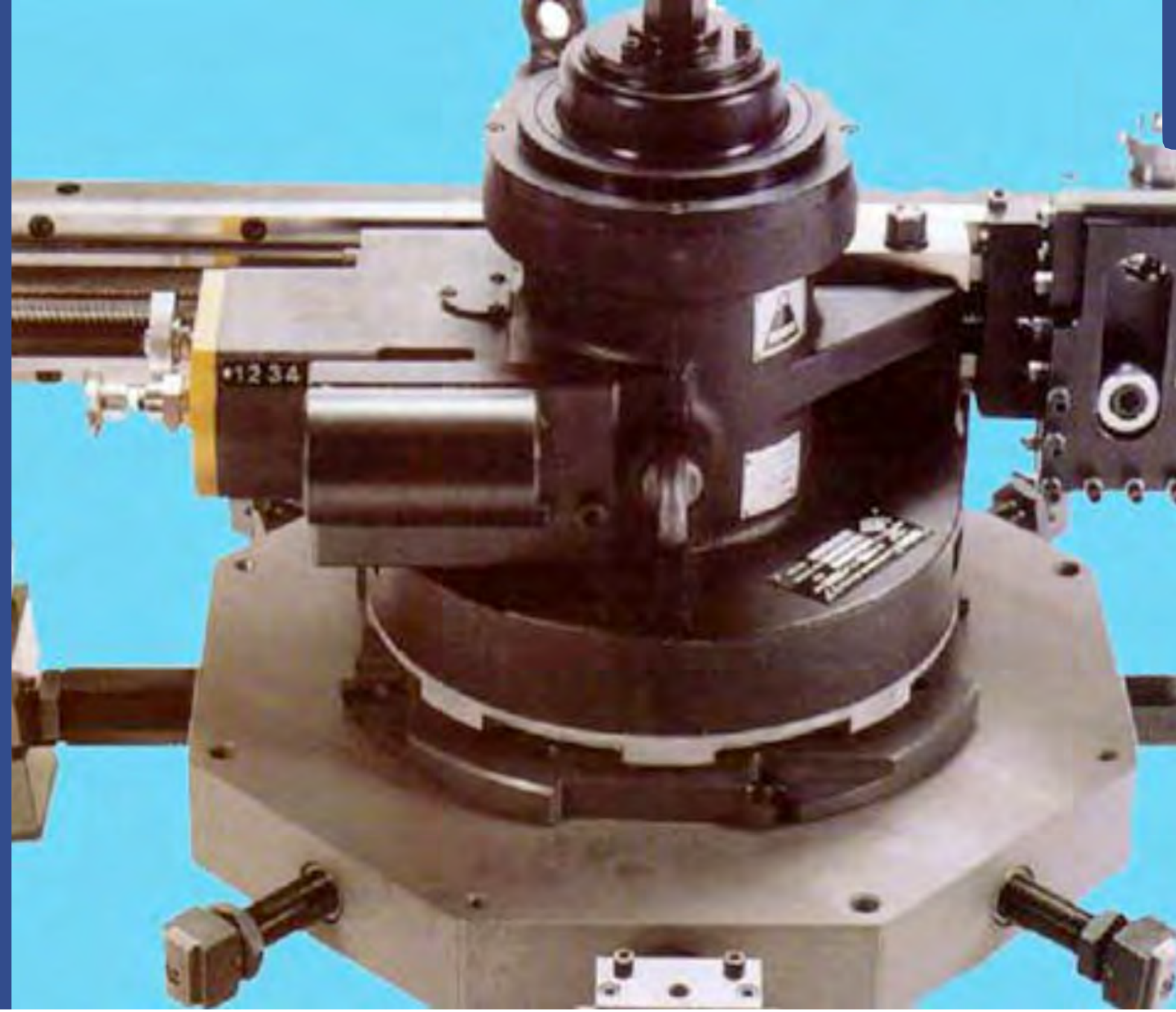


**Mactech**  
(EUROPE) LIMITED

Silk Flange Facing Machines

## Why Choose Mactech Flange Facing Machines?

- Portable Flange Facing Machines by Mactech Europe have a range of both internally and externally mounted flange facing machines that will cover most applications.
- All the portable flange facing machines are capable of maintaining high degrees of accuracy, with a variable feed rate to achieve the desired surface finish for all gasket types.
- These flanging tools can be pneumatically or hydraulically driven and are highly portable and designed to work in the most demanding of conditions.
- The complete range of Flange Facing Machines are available to Buy or Rent



## Flange Facing Machines

All the portable flange facing machines are capable of maintaining high degrees of accuracy, with a variable feed rate to achieve the desired surface finish for all gasket types.

These flanging tools can be pneumatically or hydraulically driven and are highly portable and designed to work in the most demanding of conditions.



# Silk AXL 012

The Silk AXL0122 Flange Facing Machine is constructed, as is the rest of the range, from the highest quality materials.

It is designed to give machine shop accuracy combined with ease of handling and portability in the flange range of 0-305mm (0" to 12").

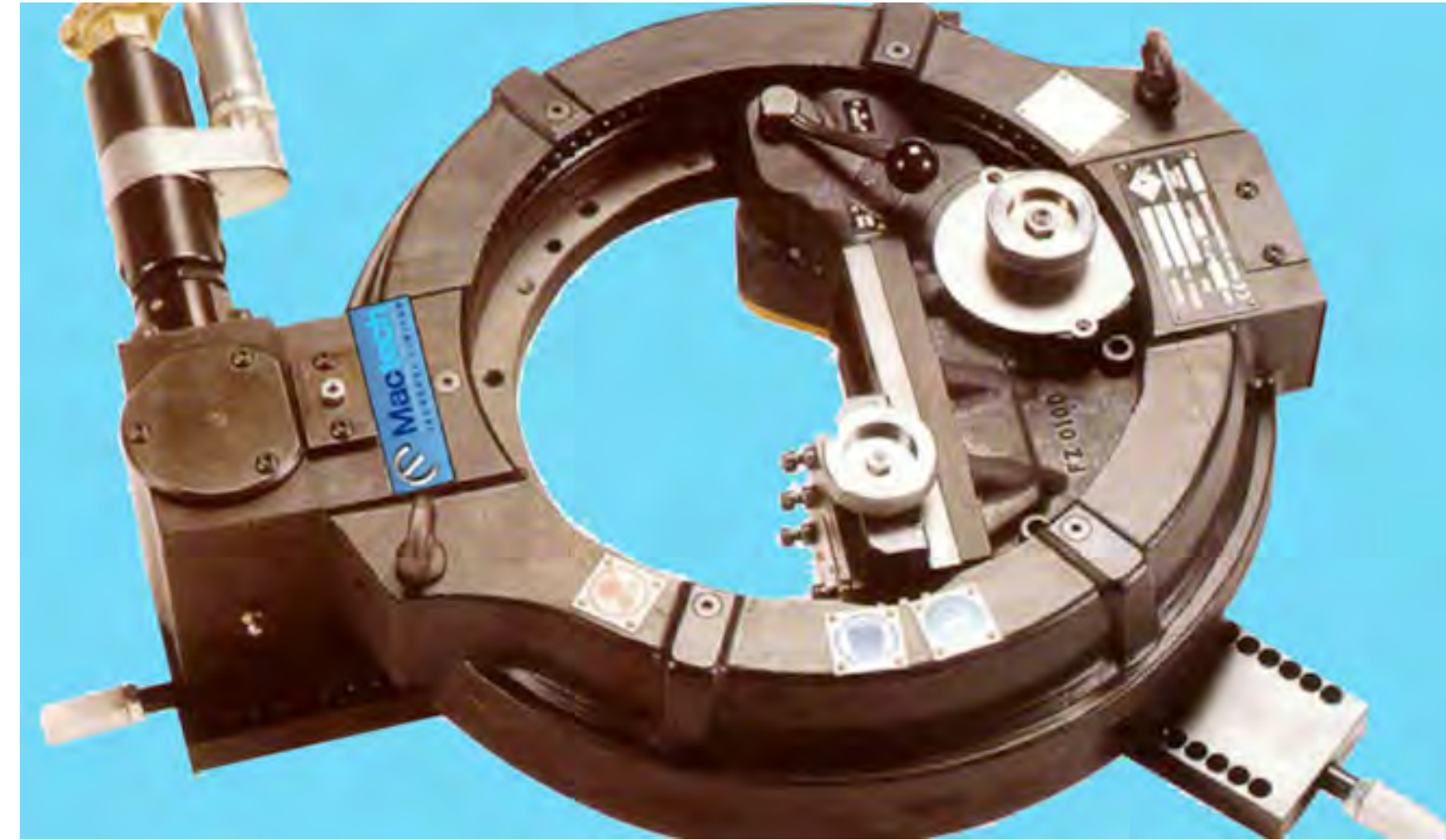
The machine consists of three main assemblies:

- Base Ring Assembly
- Four separate adjustable clamp blocks are provided which may be positioned on the base ring to suit the size of flange being machined.
- Drive and Bearing

The machine is driven by a 0.66kw (0.85hp) pneumatic motor, which is mounted directly to the drive bearing assembly and is quickly detachable.

## Benefits of Renting or Buying the Silk ALX012 Flange Facing Machine

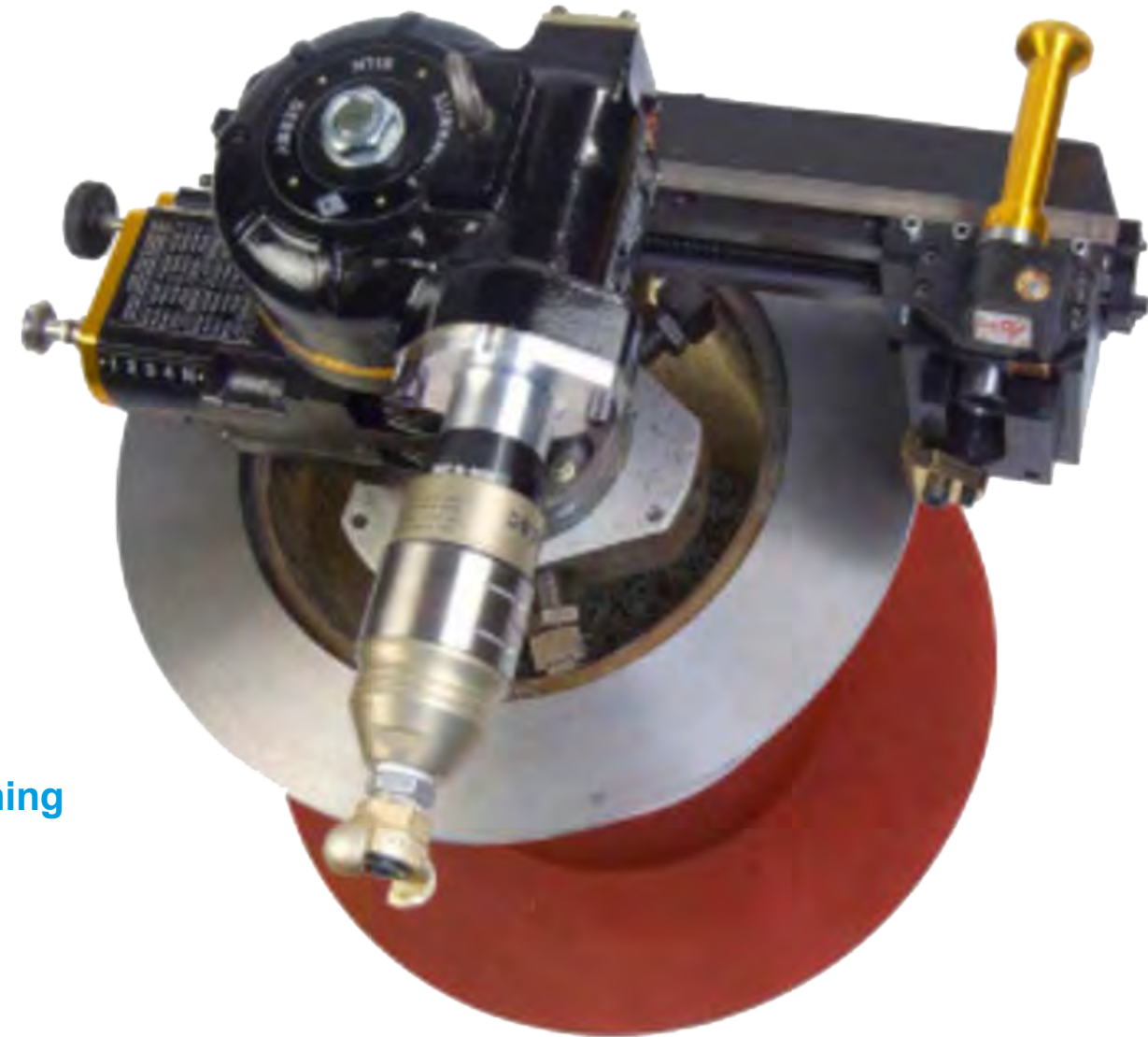
- Compact, lightweight great for onsite machining
- Externally mounted which means that its easily mounted
- Operates in any position
- Cuts "O" ring grooves, vertical grooves, "V" grooves, lens ring seats, hub profiles and weld preparations
- Achieves finishes from 1.6µm Ra to 6.3 µm (63CLA to 250CLA)
- 'Gramophone' finish when turning and 0.8µm Ra to 1.6µm (32CLA to 63CLA) when polishing
- Pneumatic drive permits use in hazardous areas
- Fitted transportable case



The Silk AXL0122 is a lightweight, portable, flange facing, grooving and weld preparation machine designed to machine full faced, raised face and grooved flanges from **0mm-305mm (0"-12")**

**FOR SALE or RENT**

The Silk FXB 6-30 Flange Facing Machine is a lightweight, portable, flange facing, grooving and weld-prep machine designed to machine full faced, raised face and grooved flanges in the 153mm- 762mm (6" to 30") diameter range.



# Silk FXB 630

## Benefits of the FXB 630

- I/D Mounted
- Precise and robust
- Compact and portable
- Operates in any orientation
- Cuts "O" Ring grooves, RTJ and other V grooves, standard and compact flange facings, weld preparations, etc.
- Achieves surface finishes from 6.3mm Ra to 1.6mm Ra (250min Ra to 63min Ra) when turning and from 1.6mm Ra to 0.8mm Ra (63min Ra to 32min) when polishing
- Pneumatic drive permits use in hazardous areas. Optional hydraulic drive is available on request
- Provided in own transportable case

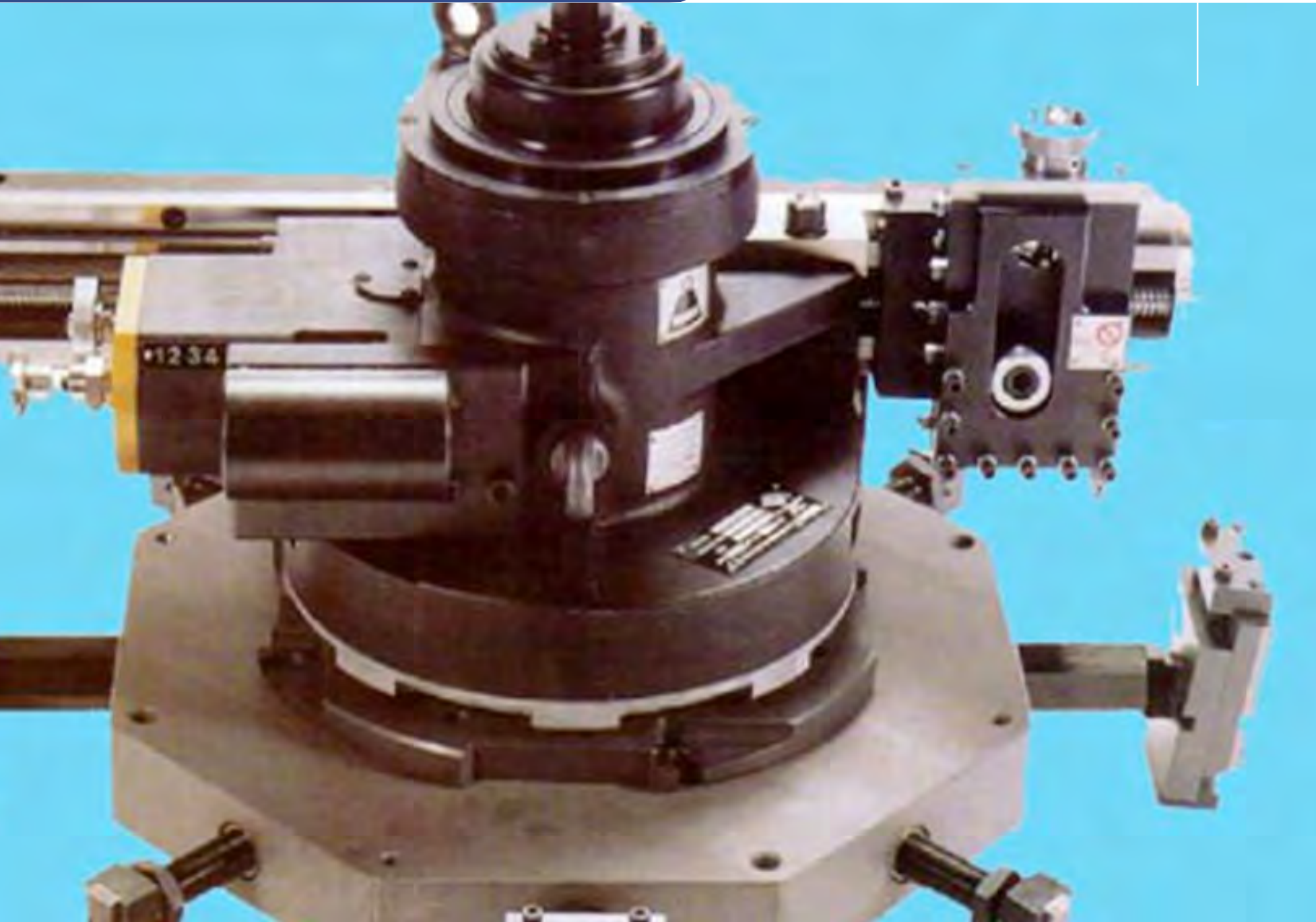


## Typical Applications

- Lens Ring Seat Cutting & Polishing
- 'V' Groove Cutting
- Tube Sheet Machining

**FOR SALE or RENT**

# Silk AXL 1445

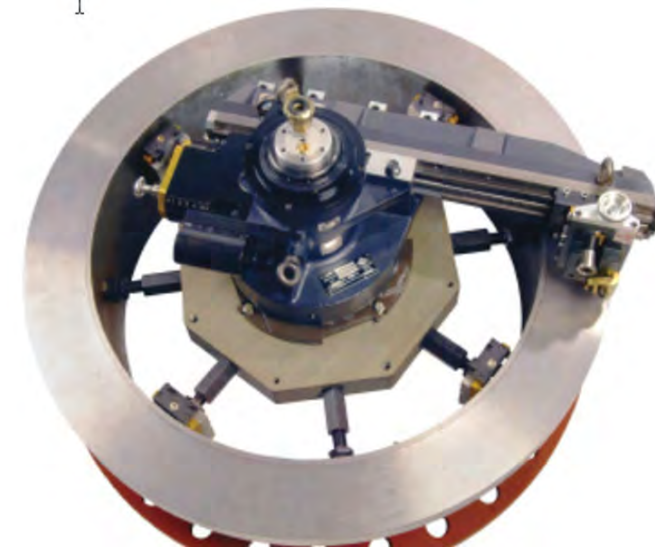


The SILK AX1445 Flange Facer is light weight and due to its internal exhaust air ducting system, surprisingly quiet. Internally mounted, this machine has a working range of 356mm (14") to 1143mm (45") and also features four continuous feed rates.

The mounting bases come in two sizes, and have micro-adjustable pads to help quickly align the base during set-up. A single 3kW (4 hp) pneumatic motor drives the turntable, adjustable arm and tool post arrangement. Optional extras include tube sheet mounting and back facing kits as well as grinding and polishing attachments

## Features

- Precise and robust
- Compact and portable
- Internally mounted
- Operates in any orientation
- Cuts "O" Ring grooves, RTJ and other V grooves, standard and compact flange facings, weld reparations, etc.
- Achieves surface finishes from 6.3mm Ra to 1.6mm Ra (250min Ra to 63min Ra) when turning and from 1.6mm Ra to 0.8mm Ra (63min Ra to 32min) when polishing
- Pneumatic drive permits use in hazardous areas
- Provided in own transportable case



**FOR SALE or RENT**

# Silk AX 024



The SILK AX024 Rotary Machining Center is a larger version of the SX012 and has a maximum clamping capacity of 584mm (23"). It has an eight independent jaw clamping arrangement, and is driven by two 1.7kW (2.3hp) high torque pneumatic motors. The two continuous, automatic feeds offer a fine and a coarse surface finish.

Like its smaller brothers, these precision tools have a host of interchangeable "Bolt-On" extras covering almost any machining operation offered in a conventional machine shop.

This flexibility provides a highly cost effective solution to field machining applications, saving both time and money.

## Features

- Precise and robust
- Compact and portable
- Internally mounted
- Operates in any orientation
- Cuts "O" Ring grooves, RTJ and other V grooves, standard and compact flange facings, weld reparations, etc.
- Achieves surface finishes from 6.3mm Ra to 1.6mm Ra (250min Ra to 63min Ra) when turning and from 1.6mm Ra to 0.8mm Ra (63min Ra to 32min) when polishing
- Pneumatic drive permits use in hazardous areas
- Provided in own transportable case



**FOR SALE or RENT**

# Silk AX 2872 Flange Facing Machine

The Silk AX2872 Flange Facing Machine is a lightweight, portable, flange facing, grooving and weld preparation machine designed to machine full faced, raised face and grooved flanges from 711mm-1829mm (28"-72")

## Features

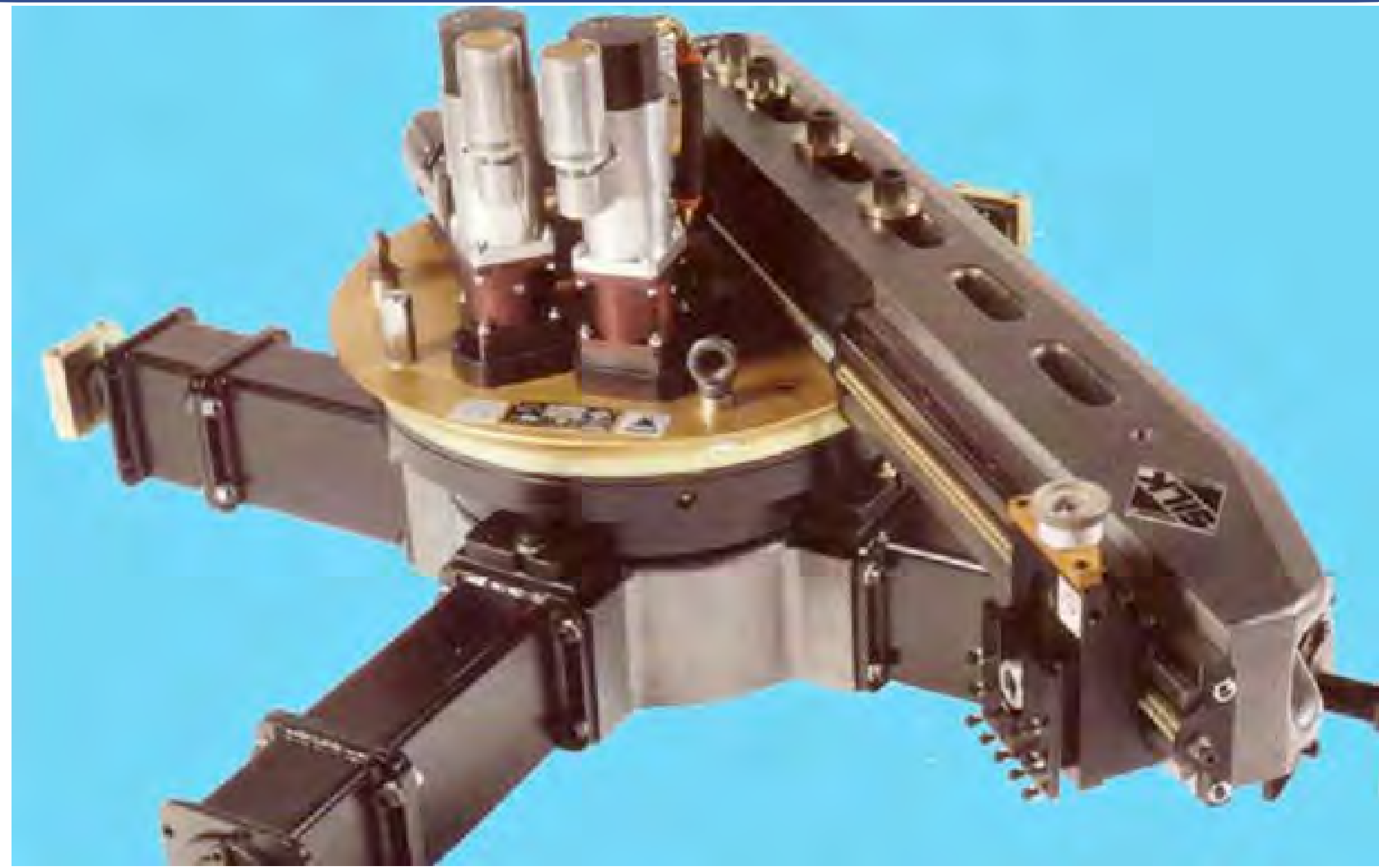
- Compact, lightweight
- Bore mounted
- Operates in any position
- Cuts "O" ring grooves, vertical grooves, "V" grooves, lens ring seats and weld preparations
- Achieves finishes from 1.6µm Ra to 6.3 µm (63CLA to 250CLA)
- 'Gramophone' finish when turning and 0.8µm Ra to 1.6µm (32CLA to 63CLA) when polishing
- Pneumatic drive permits use in hazardous areas
- Fitted transportable case

The Silk AX2872 Flange Facing Machine is constructed, as is the rest of the range, from the highest quality materials. It is designed to give machine shop accuracy, combined with ease of handling and portability, in the flange range of 711mm (28") to 1829mm (72"). Spur gears engage directly on the drive ring, keeping power requirements and losses to a minimum and allowing maximum torque at the cutting tool.

**FOR SALE or RENT**

## Typical Silk AX2872 Flange Facing Machine Applications

- Tube Sheet Machining
- Recessed Gasket Grooves
- Hub Profiles



# Silk AX 321 I.D. Portable Flange Facing Machine

At 26.5kg (58lbs.), the AX321 is the lightest flange facing machine in the Silk range. It is bore mounted and covers a range of flanges from 75mm (3") internal diameter to 533mm (21") external diameter.

Depending on the flange bore size, rapid and effective internal mounting is achieved via a unique system of collets, or by a spigot base for the larger diameters.

The cutting tool feed assembly consists of four rails and a crosshead with a swiveling tool post that are supported by precision linear bearings, providing both rigidity and extreme accuracy.

The feed gearbox provides two cutting tool feed rates and is supplied with an additional lead screw to provide a total of four feeds.

The machine is driven by a 630W (0.85hp) pneumatic motor mounted either vertically or horizontally, if space is restricted.

**FOR SALE or RENT**



The Silk AX321 I/D Mounted Flange Facing Machine at 26.5kg (58lbs.) is the lightest flange facing machine in the Silk range. It is bore mounted and covers a range of flanges from 75 mm (3") internal diameter to 533 mm (21") external diameter.

## Silk AX321 Features

- Precise and robust
- Compact and portable
- Internally mounted
- Operates in any orientation
- Cuts "O" Ring grooves, RTJ and other V grooves, standard and compact flange facings, weld preparations, etc.
- Achieves surface finishes from 1.6µm Ra to 6.3µm Ra (63 CLA to 250 CLA) when turning and from 0.8µm Ra to 1.6µm Ra (32 CLA to 63 CLA) when polishing
- Pneumatic drive permits use in hazardous areas. Optional hydraulic drive is available on request
- Provided in own transportable case



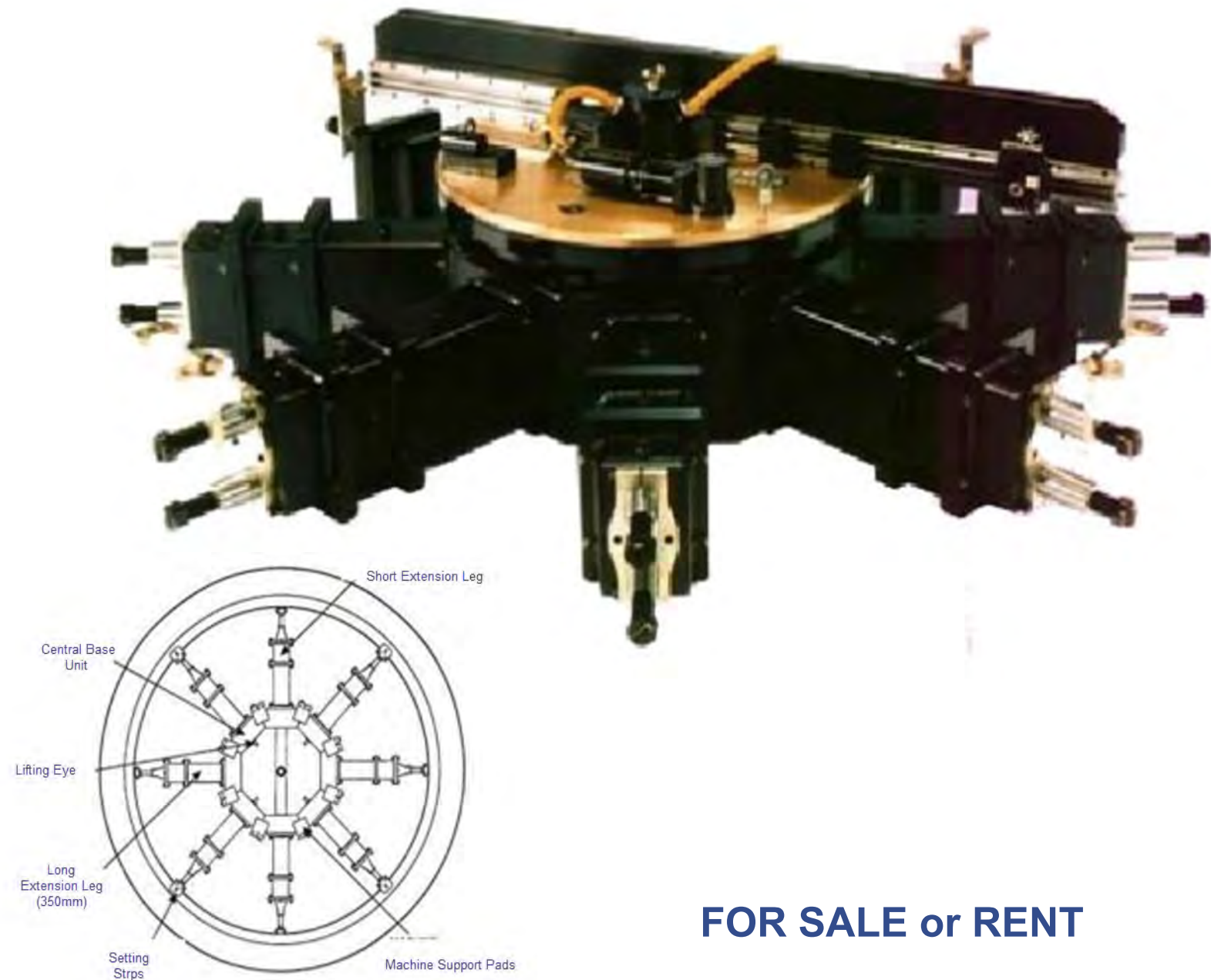
# Silk AX48120 Flange Facer

This SILK AX48120 is currently the largest internally mounted machine in our range. It can mount inside flanges having 1219mm (48") bores and can machine out to over 3048mm (120") in diameter.

The machine may also be surface mounted, where it is commonly used for crane pedestal and tube sheet refurbishment work. Like all Silk machines, it is of modular design and operates easily in any orientation.

The standard bore mounting base has eight ram type jaw assemblies, four of which have unique leveling device attachments used to assist with the setting-up operations. Power is provided by two 3kW (4 hp) pneumatic motors which produce high torque and maximum cutting power.

The same continuous feed gearbox utilized on the AX2872, AX1445 and FXB630 machines minimizes the need for spare parts. Optional extras include a hydraulic drive conversion kit, tube sheet mounting and machining kits, grinding and milling kits and an outside diameter mounting kit.



**FOR SALE or RENT**

## FEATURES

- Precise and robust
- Compact and portable
- Internally mounted
- Operates in any orientation
- Cuts "O" Ring grooves, RTJ and other V grooves, standard and compact flange facings, weld preparations, etc.
- Achieves surface finishes from 6.3mm Ra to 1.6mm Ra (250min Ra to 63min Ra) when turning and from 1.6mm Ra to 0.8mm Ra (63min Ra to 32min) when polishing
- Pneumatic drive permits use in hazardous areas. Optional hydraulic drive is available on request.
- Provided in own transportable case

## Optional Accessories

- Tube Sheet Mounting Kit
- Tube Sheet Back Facing Kit
- O.D. Mounting Kit
- Orbital Mounting Kit
- Hydraulic Conversion Kit



**Mactech Europe - Head Office**

Mactech House  
 Riverdane Road  
 Eaton Bank Trading Estate  
 Congleton  
 Cheshire  
 CW12 1PN

+ 44 (0) 1260 281431

**Mactech Europe - Aberdeen Office**

Mactech House  
 Howe Moss Drive  
 Kirkhill Ind. Estate  
 Dyce  
 Aberdeen  
 AB21 0GL

+ 44 (0) 1224 722666

**Mactech Europe BV - Holland**

Moerbei 16  
 3371 NZ  
 Hardinxveld-Giessendam  
 Netherlands

+ 31 (0) 184 633 953

Model	Diameter Range
Silk AXL012	Maximum Clamping Capacity 12 inches   305 mm
Silk AX024	Maximum Clamping Capacity 23 inches   584 mm
Silk AX321	3 inches ID to 21 inches OD   75 mm ID to 533 mm OD
Silk FXB630	6 inches ID to 30 inches OD   153 mm ID to 762 mm OD
Silk AX1445	14 inches ID to 45 inches OD   355 mm ID to 1140 mm OD
Silk SX2872	28 inches ID to 72 inches OD   711 mm ID to 1829 mm OD
Silk AX48120	48 inches ID to 120 inches OD   1219 mm ID to 3048mm OD

[www.mactech europe.co.uk](http://www.mactech europe.co.uk)  
[www.mactech hire.com](http://www.mactech hire.com)  
[info@mactech europe.co.uk](mailto:info@mactech europe.co.uk)