



# Dual Pin Drill

Dual Pin Fits on 36 to 65 inch ( 914.4 to 1651 mm) Diameter Casing.

---

The Mactech Dual & Single Pin Drill has the power and portability for drilling large rigging and vent holes in casing.

The precision slide and bracket assembly provides an extremely rigid platform for the most demanding drilling jobs, and can be fitted to any of the Mactech clamshell lathes.

Worm drive gearbox and handwheel, allows for precise positioning of the cutters.

The hydraulic/pneumatic motor can easily cut through the toughest casing.

Open clamp chassis for fast mounting, up to 65 inch (1651mm) capacity, and sturdy construction make this an ideal tool for offshore use.



## Benefits

---

- Dual Pin or Single Pin Drills Availability
- Quickly Drills 2 to 6 inch holes through multi-string casing
- Fits on 36 to 65 inch diameter casing, the largest operating range in the industry
- Single or Dual Pin Drill setup in one machine
- Rolling frame eliminates need for overhead lifting
- Modular design allows setup in spaces other drills won't fit
- Onboard or remote operator controls
- Built of corrosion-resistant materials
- Lightest drill in the industry
- Built in the USA

Used for large diameter drilling subsea.

- Dual drills to reduce drilling time
- Open clamp chassis for fast setup
- Adjustable to any size casing within the defined range



# Dual Pin Drill

Dual Pin Fits on 36 to 65 inch ( 914.4 to 1651 mm) Diameter Casing.

## Specifications

### Capabilities

- Single Pin Drill for topside use only: 914mm to 1170mm diameter casing, single-side drilling operation.
- Dual Pin Drill: 914 mm to 1650mm diameter casing, two aligned pin holes per operation.
- Drill diameter up to 254mm (10").

### Drives

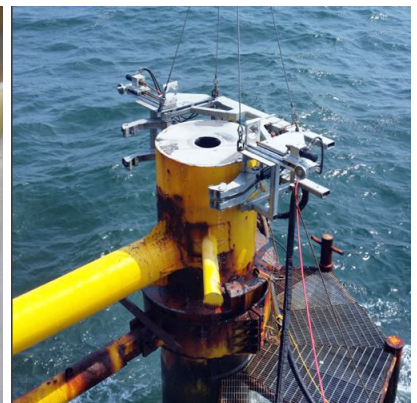
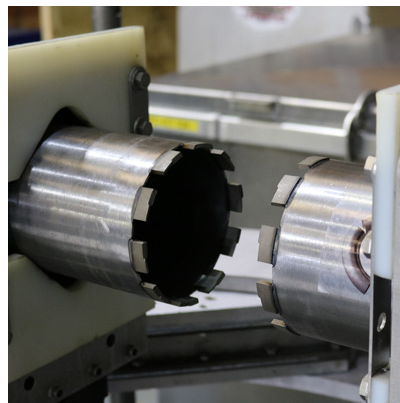
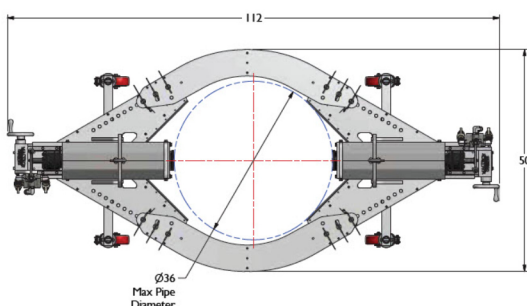
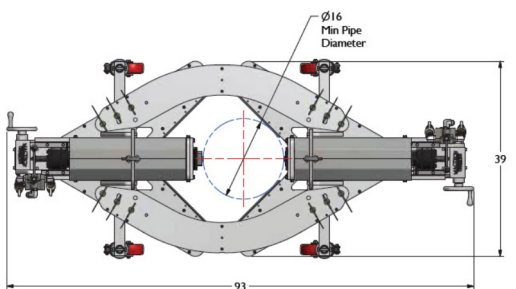
- Two hydraulic drill motor options are included with the Dual Pin Drill.
- Typically used for heavy cutting applications, where higher torque and lower speed are required.
- Option to be controlled from surface or subsea by ROV control panel.

### Hydraulic Power Requirements

- 30 gpm (130l/min) @ 3000 psi minimum.

### Weights

- Dual Pin Drill Operating Weight 1100Kg (2200lbs).
- Shipping Weight 1500Kg (3300bs).
- Intermediate bearing support option available with bearing, backplate and weld legs.



### Dual Pin Drill Configuration

Minimum Pipe Diameter	16 inches
Maximum Pipe Diameter	36 inches
Stroke	21 inches
Feed Rate Per Handwheel Revolution	0.10 inches