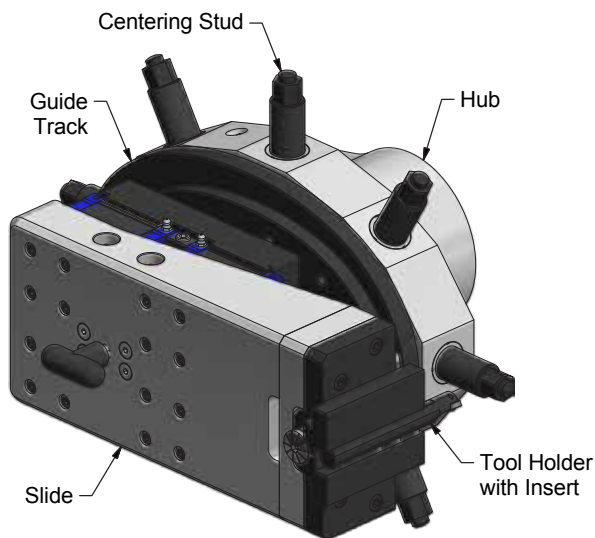
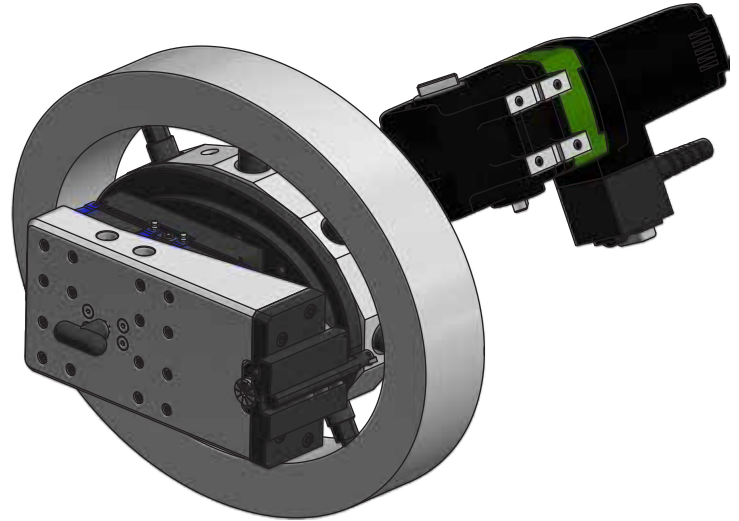


ELLIPTICAL MANWAY FACING MACHINE

MACTECH PORTABLE MACHINING SOLUTIONS

Restore Elliptical Manway Sealing Faces

Mactech's Elliptical Manway Facing Machine restores elliptical sealing faces to new condition, eliminating the need for replacement. Corroded, pitted and leaking gasket surfaces can be fully restored with this easy to set up and operate tool. Single point tooling provides a gasket-ready phono-finish. The Elliptical Manway Facing Machine is available as machine packages, which include all you need to complete the job, including tooling and elliptical guide tracks. Custom-size elliptical guide tracks are also available. Call Mactech to choose the right machine for your applications.



Capabilities

The Elliptical Manway Facing Machine is capable of machining elliptical faces of the following dimensions:

- 12 x 16 inches (305 x 406 mm)
- 14 x 18 inches (356 x 457 mm)
- 18 x 24 inches (457 x 610 mm)

Drives

- Electric Drive: 2200W, 30-210 rpm, 350 ft-lbs max torque (475 Nm), 110V
- Electric Drive: 2200W, 30-210 rpm, 350 ft-lbs max torque (475 Nm), 220V
- Air Drive: 2.2 hp, 30-68 rpm, 482 ft-lbs max torque (654 Nm)

Tooling

- Tool Holder with carbide or high speed steel inserts
- 445-8516 - Tool Holder, Carbide Insert
- 445-2010 - Carbide Insert
- 445-8515 - Tool Holder, High Speed Steel Insert
- 445-2017 - High Speed Steel Insert

Machine Packages

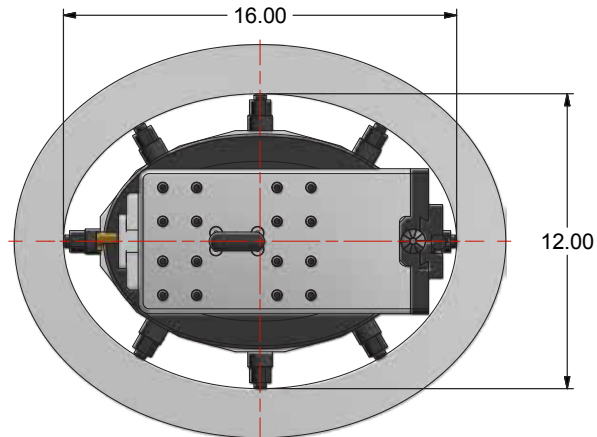
Machine packages include the Elliptical Manway Facing Machine, Shipping Box and Tool Kit. Air or electric drive motor is selected separately.

Machine Packages

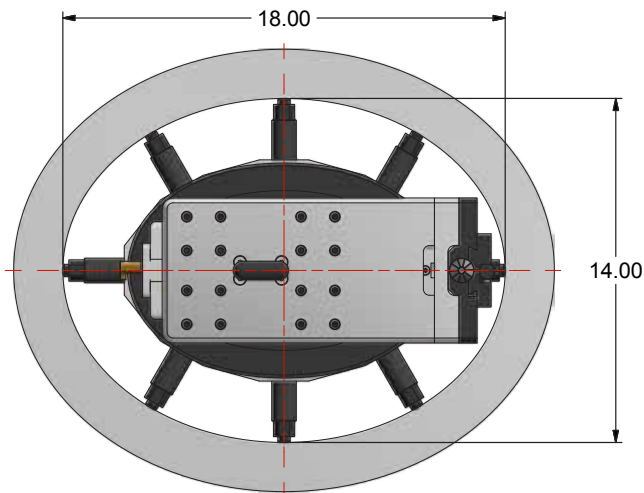
605-6745	Elliptical Manway Facing Machine Package, 12 x 16, 14 x 18
605-6810	Elliptical Manway Facing Machine Package, 18 x 24
605-6807	Elliptical Manway Facing Machine Package, 12 x 16, 14 x 18, 18 x 24

ELLIPTICAL MANWAY FACING MACHINE

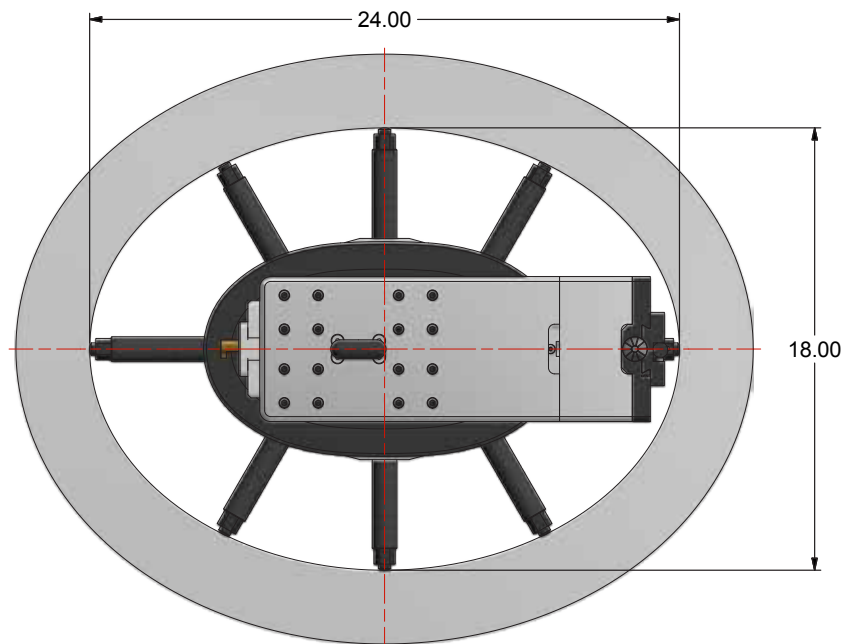
MACTECH PORTABLE MACHINING SOLUTIONS



600-6745 - 12 x 16 Elliptical Flange



600-6745 - 14 x 18 Elliptical Flange



600-6810 - 18 x 24 Elliptical Flange